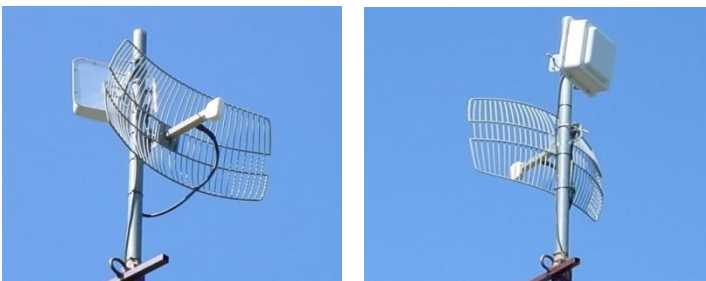




How does City Broadband Internet service work?

City Broadband provides an Internet connection via a wireless antenna system. An antenna is installed on your roof with an attached radio receiver/transmitter. This antenna is pointed at a nearby Access Point tower, and must have a clear line of sight (no trees, buildings, or hills blocking the path). When you send and receive information over the Internet, it goes over the wireless link from your radio/antenna to our Access Point. From there that information travels over our “backhaul,” which is a point-to-point wireless link to a fiber-optic connection hooked directly to the Internet. City Broadband service has very low “latency” (or delay) compared to satellite Internet, where signals must travel thousands of miles into space.



Sales Inquiry through Voice
(Monday to Saturday 10:30 AM to 6:30 PM)
+91 9982722331, +91 9587459111

HOW DOES IT WORK

How City Broadband wired into my home?

City Broadband professionally mounts an antenna on your roof, then runs a CAT 5 wire (50 Mtr. Maximum) down the outside wall of your home (we try to follow a rain gutter to hide the cable). We then bring the wire into your home by drilling a small hole or following an existing entry into the home such as a duct or prior cable, phone or satellite TV installation entry. An Ethernet jack is then installed on the inside of an exterior wall (your computer should have an Ethernet port - all new computers do. An older computer may need an adapter). If you need additional inside wiring to extend the connection into your home, you may need to hire a wiring contractor or may want to consider using a wireless router (available at computer stores) to distribute the connection throughout your home.

How to connect multiple computers with City Broadband connection?

City Broadband Internet connection will install a single Ethernet jack inside your home. If you have more than one computer, you will need to purchase your own wireless wi-fi router. A router acts as a splitter, allowing up to four computers to be plugged in directly, and it also wirelessly sends your Internet signal throughout your home to any computer or laptop with a wireless card. An 802.11g wireless router typically can be purchased from any computer or office supply store.

